

PLANT SCHEDULE

BOTANICAL NAME	COMMON NAME	QUANTITY	SIZE	CALIPER	SPACING
SHRUBS					
LIGUSTRUM JAPONICUM	LIGUSTRUM	9	18"	3 GAL	AS SHOWN
GROUND COVER					
SOD	CENTIPED	ESTIMATE			
PMULCH	PINE STRAW	ESTIMATE	BALES	FRESH DRY	NO STICKS

PLANT LEGEND

MITIGATION

SHRUBS
LIGUSTRUM

INCHES OF MITIGATION (REQUIRED) DBH: = 00" DBH
PROPOSED MITIGATION TREES (4" DBH): = 0 TREES X 4" = 00" DBH

MITIGATION BANK REQUIRED: = (00" - 00") = 00"
MITIGATION BANK PAYMENT: = (\$217.50 PER INCH) = \$0.00

GROUND COVER

SOD

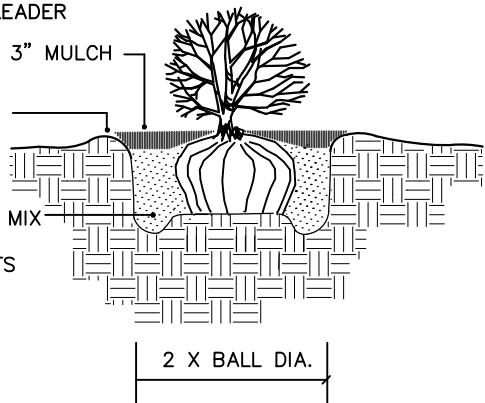
NOTE:

* SHRUB SHALL BEAR SAME RELATION TO FINISH GRADE AS IT BORE TO PREVIOUS EXISTING GRADE

* FOR B&B SHRUBS ONLY:
THIN BRANCHES AND FOLIAGE BY 1/3
RETAIN SHAPE OF SHRUB DO NOT CUT
ALL END TIPS OR LEADER

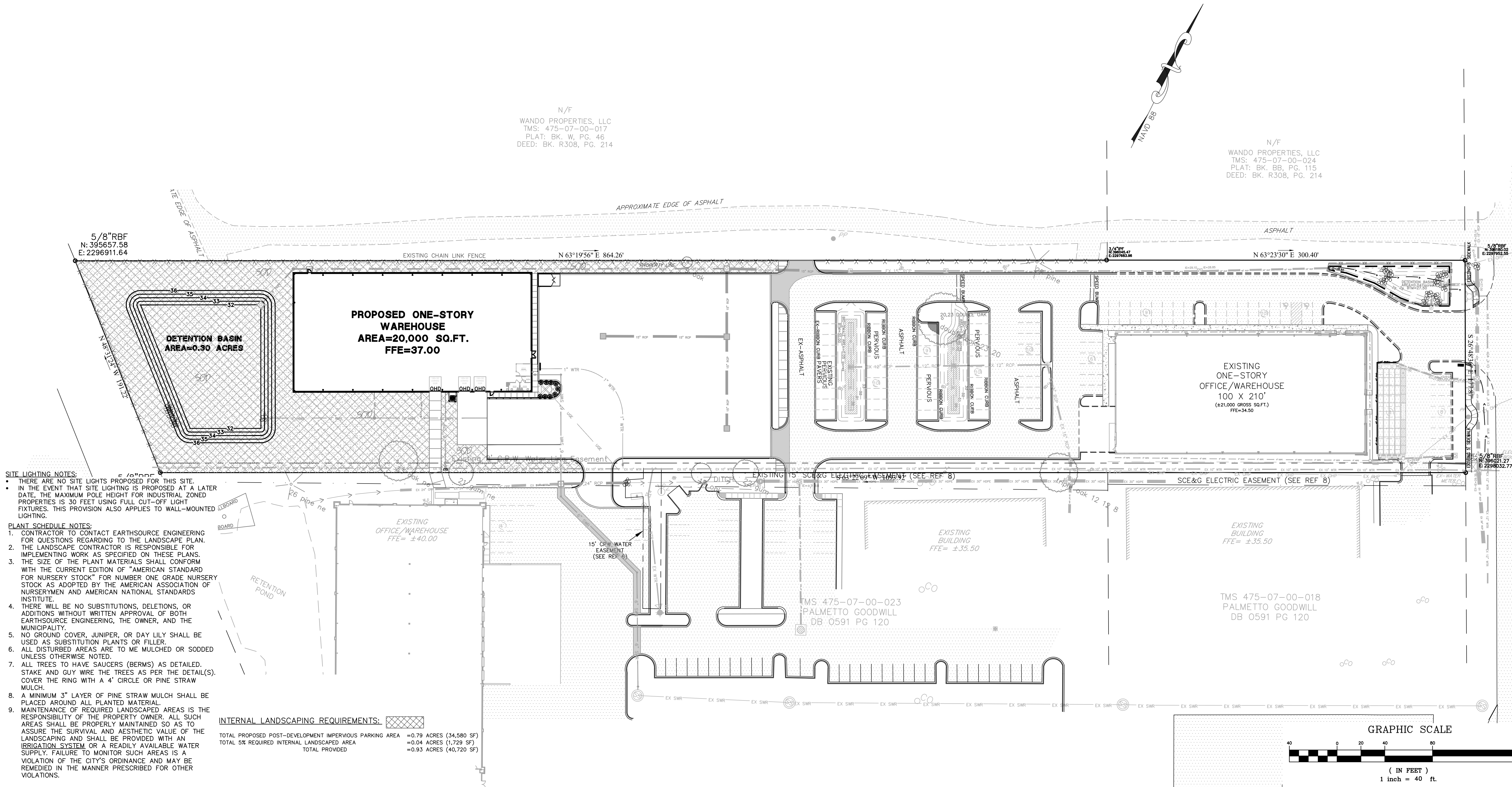
FORM SAUCER WITH
3" CONTINUOUS RIM
AS NECESSARY

SPECIFIED PLANTING MIX
WATER & TAMP TO
REMOVE AIR POCKETS



SHRUB PLANTING

SCALE: NOT TO SCALE



SITE LIGHTING NOTES:

- THERE ARE NO SITE LIGHTS PROPOSED FOR THIS SITE.
- IN THE EVENT THAT SITE LIGHTING IS PROPOSED AT A LATER DATE, THE MAXIMUM POLE HEIGHT FOR INDUSTRIAL ZONED PROPERTIES IS 30 FEET USING FULL CUT-OFF LIGHT FIXTURES. THIS PROVISION ALSO APPLIES TO WALL-MOUNTED LIGHTING.

PLANT SCHEDULE NOTES:

- CONTRACTOR TO CONTACT EARTHSOURCE ENGINEERING FOR QUESTIONS REGARDING TO THE LANDSCAPE PLAN.
- THE LANDSCAPE CONTRACTOR IS RESPONSIBLE FOR IMPLEMENTING WORK AS SPECIFIED ON THESE PLANS.
- THE SIZE OF THE PLANT MATERIALS SHALL CONFORM WITH THE CURRENT EDITION OF "AMERICAN STANDARD FOR NURSERY STOCK" FOR NUMBER ONE GRADE NURSERY STOCK AS ADOPTED BY THE AMERICAN ASSOCIATION OF NURSERYMEN AND AMERICAN NATIONAL STANDARDS INSTITUTE.
- THERE WILL BE NO SUBSTITUTIONS, DELETIONS, OR ADDITIONS WITHOUT WRITTEN APPROVAL OF BOTH EARTHSOURCE ENGINEERING, THE OWNER, AND THE MUNICIPALITY.
- NO GROUND COVER, JUNIPER, OR DAY LILY SHALL BE USED AS SUBSTITUTION PLANTS OR FILLER.
- ALL DISTURBED AREAS ARE TO BE MULCHED OR SODDED UNLESS OTHERWISE NOTED.
- ALL TREES TO HAVE SAUCERS (BERMS) AS DETAILED. STAKE AND GUY WIRE THE TREES AS PER THE DETAIL(S). COVER THE RING WITH A 4" CIRCLE OR PINE STRAW MULCH.
- A MINIMUM 3" LAYER OF PINE STRAW MULCH SHALL BE PLACED AROUND ALL PLANTED MATERIAL.
- MAINTENANCE OF REQUIRED LANDSCAPED AREAS IS THE RESPONSIBILITY OF THE PROPERTY OWNER. ALL SUCH AREAS SHALL BE PROPERLY MAINTAINED SO AS TO ASSURE THE SURVIVAL AND AESTHETIC VALUE OF THE LANDSCAPING AND SHALL BE PROVIDED WITH AN IRRIGATION SYSTEM OR A READILY AVAILABLE WATER SUPPLY. FAILURE TO MONITOR SUCH AREAS IS A VIOLATION OF THE CITY'S ORDINANCE AND MAY BE REMEDIED IN THE MANNER PRESCRIBED FOR OTHER VIOLATIONS.

INTERNAL LANDSCAPING REQUIREMENTS:

TOTAL PROPOSED POST-DEVELOPMENT IMPERVIOUS PARKING AREA = 0.79 ACRES (34,580 SF)
TOTAL 5% REQUIRED INTERNAL LANDSCAPED AREA = 0.04 ACRES (1,729 SF)
TOTAL PROVIDED = 0.93 ACRES (40,720 SF)

South Carolina 811

EARTHSOURCE ENGINEERING

LANDSCAPE DESIGN & CONSTRUCTION

www.earthsourcesc.com

SOUTH CAROLINA

EARTHSOURCE ENGINEERING

LANDSCAPE DESIGN & CONSTRUCTION

NO. C01075

SOUTH CAROLINA

EARTHSOURCE ENGINEERING

LANDSCAPE DESIGN & CONSTRUCTION

NO. 21253

09-21-22

MICHAEL BERRY

GOODWILL WAREHOUSE EXPANSION

6813 (BLDG. 200) RIVERS AVENUE

NORTH CHARLESTON, SC 29406

LANDSCAPE PLAN & PLANT SCHEDULE

REVISIONS

NO.	DATE	BY	REVISION
1	12.14.21	TJM	PER CITY OF N. CHARLESTON PLANNING COMMENTS I
2	01.05.22	TJM	PER INITIAL MS4 SUBMITTAL
3	02.15.22	TJM	PER MS4 COMMENTS I
4	02.23.22	TJM	PER NCSD INITIAL SUBMITTAL
5	06.03.22	TJM	PER CWS COMMENTS I
6	08.20.22	TJM	PER CWS COMMENTS II DESIGN
7	08.24.22	TJM	PER CITY OF N. CHARLESTON PLANNING COMMENTS II
8	09.21.22	TJM	PER SENIOR ENGINEER REVIEW

DRAWN: TJM

CHECKED: TJM

DATE: 09.01.21

JOB NO. 21-156

FINAL CONSTRUCTION DRAWINGS

SHEET NUMBER L-100